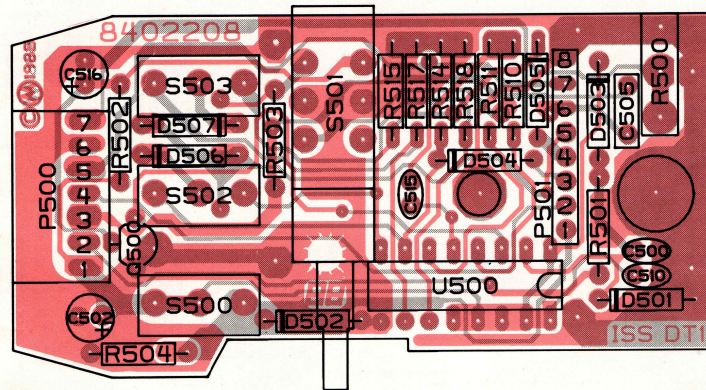


63B02209D01

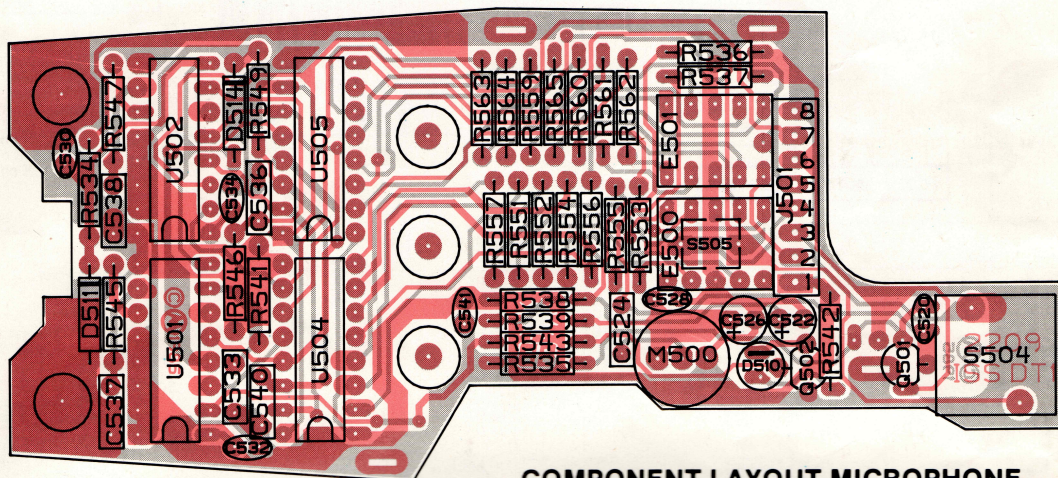
TABLE	SWITCH POSITION		
	a	b	c
S502	CHANNEL INCREMENT	REST.	CHANNEL DECREMENT
S502 (a)	LOCAL OFF	---	LOCAL ON
S502 (b)	SCAN ON	---	SCAN OFF
S502 (c)	SCAN ON	OFF	LOCAL ON

**COMPONENT LAYOUT MICROPHONE ENCODER BOARD**



63B02208D02

SHOWN FROM SOLDER SIDE



63B02209D02

**COMPONENT LAYOUT MICROPHONE DISPLAY BOARD**

SHOWN FROM SOLDER SIDE